



SPECIGRAM

June 2025



President's Message	p. 2
June meeting announcement	p. 3
CSI Pittsburgh Election Results	p. 4
CSI National Convention	p. 5
New Members	p. 6
Member Anniversaries	p. 6
Chapter Leadership	p. 7

PRESIDENT'S MESSAGE

As we move into summer and maybe a time to slow down and take some vacation, we can take some time to look back at our CSI Pittsburgh year to see where we've been. Our chapter continues to grow, albeit slowly. From 65 members in July of 2024 to 74 members as of last month; our chapter continues to add more professionals to our rank. Now, if we can get those members to attend all of our monthly meetings!



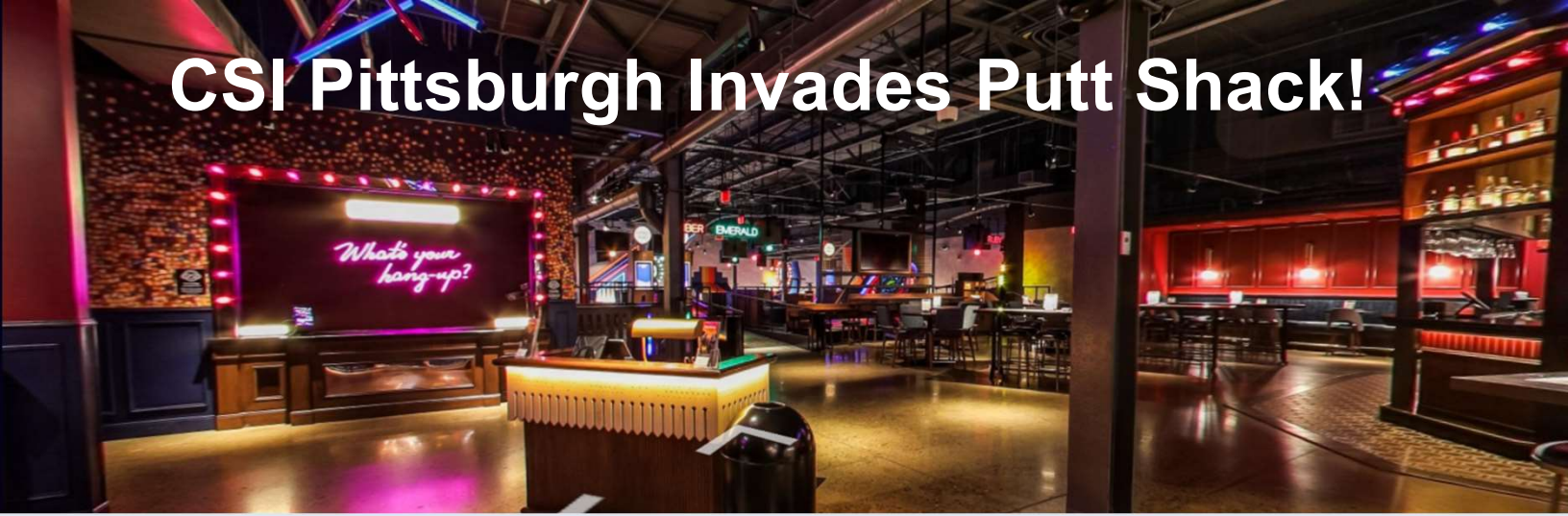
Speaking of monthly programs, we held a variety of programs that hopefully catered to all members. We started in September with a program "Taming the Specification Beast" which was meant to highlight some of our specifiers and the work they do. We had a great tour of the mostly completed FNB Financial Center, a rare high-rise project that our members got to see behind the scenes. Let me digress for a minute and reminisce about a CSI Pittsburgh chapter tour of the then named Consol Energy Center around 2010. I remember walking along the catwalks high above center ice. What other opportunity would I have of seeing areas that the general public never gets to see? We also took a tour of a polyisocyanurate insulation at Elevate's facility near New Stanton. You can learn a lot about design and construction by seeing how materials are made (excellent swag BTW).

We can't forget the good times we had at the Holiday Party at the Duquesne Club. Thanks to all of the sponsors who spread their information along with some yummy treats. Hanging out with our members is always fun. Looking back, I was blessed to talk with Bob Bailey here not knowing that he would pass away in early February (RIP Bob). Another old friend was hearing an economic forecast from Jeff Burd. With all of the economic upheaval it was great to get Jeff's perspective on our local economy. We took our meetings on the road again to AE7 Architects where we heard about critical connections for air barriers from Danielle Jackson of York Flashing.

So, our chapter is doing well and its time to celebrate our accomplishments and enjoy an evening of fun and camaraderie at Putt Shack. I hear over and over again that you get out of an organization what you put into it. We would love to have members more involved in our chapter. The network that you develop here is second to none. Maybe I need to be preaching to the designers more than our trusted advisors (vendors) who have already taken leadership roles. Many of you follow Katelyn Rossier and her MentorDINO – why is she so popular? She is educating her followers. CSI Pittsburgh does the same thing so come to a meeting and get involved. You'll be glad you moved out of your comfort zone.

We also passed a bylaws change this year which reduced the size of the board. That will make it easier to get a quorum and won't take so long to move up within the leadership ranks. I wanted to thank Sam Roberts of the Garland Companies for serving on the board and I wanted to give a special shout out to Kelly Brown of RM Creative who will be rotating off of the board. Her past leadership, including president of our chapter, has been immense to the chapter and keeping us relevant and engaged. She continues to assist by offering her office for monthly meetings and her work on the Holiday Party. Thanks to Kelly for being an ardent supporter of CSI and the chapter and I hope she is a great example to those thinking of becoming more involved with our chapter.

CSI Pittsburgh Invades Putt Shack!



June 10th

**PuttShack, 1729 Smallman St, Pittsburgh, PA 15222,
6:00 pm to 8:00 pm**

CSI Pittsburgh is having their year-end event at PuttShack in the Terminal Building. PuttShack is the world's first and only tech-infused mini golf experience. They have reimagined social entertainment for all generations. Enjoy an evening full of mini-golf, food and drinks in our own private area. Thanks to our sponsors for keeping member costs reasonable (see list below).

Includes: one round of mini-golf, buffet, and free beer, wine and soft drinks.

Sponsors:

A.L. Harding & Co.
Carlisle SynTec / Ghise Associates
Cascade Construction Products
GAF
RJ Bridges Corp.

Registration: <https://mp.gg/b3bwuym>



CSI Pittsburgh Chapter Election Results, FY 2026

Year in parentheses shows end of term

President (26)	Brian Trimble, International Masonry Institute
President-Elect (26)	Dan Barra, DSS Tri-state ASSA ABLOY
Treasurer (27)	Marty Thornton, AE Works Ltd.

Board Members (3-year terms):

Joanna Beres (27)	Code.Sys Code Consulting [to fill vacant director position of Joel Stillwell]
Jason Henze (28)	Overhead Door Co. of Pittsburgh
Judy Reilly (28)	Dormakaba

Continuing in their positions:

Secretary	Susan Henshaw, The Bekon Group (26)
------------------	-------------------------------------

Immediate Past-President	Matt Lander, AVT Inc. (26)
---------------------------------	----------------------------

Board Members:

Kate Schuster, VO George Group (26)
Courtney Watson, GCP (26)
Miki Vargo, LGA Partners (27)

Congratulations to our new (and continuing) leaders!!



NATIONAL CONFERENCE 2025

2025 CSI National Conference

Gain new skills and grow your network. Join more than 400 of your peers as we discover the trends shaping our industry and share strategies for helping you navigate the changes ahead.

October 15-17, 2025 | Cleveland, OH

[Register Today](#)

Early bird rate end June 17!

Built-In Networking

Connect with a community of specifiers dedicated to helping each other find solutions and improve their construction documentation skills.

Community Celebration

Recognize and support your peers who are making CSI stronger. Cheer on newly inducted CSI Fellows, Distinguished Members, impactful local chapters, and CSI Certification earners.

Impactful Sessions

Engage in 30+ peer-reviewed educational sessions, problem-solve with peers, and earn the learning units you need to stay ahead. [Here's the agenda.](#)



New Members

None this month (ask others to join!)

Member Anniversaries

May

- | | | |
|----|------------------|------------------------|
| 40 | LouAnn Fornataro | Fornataro Architecture |
| 12 | Damian Carnegie | AVT, Inc. |

June

- | | | |
|----|-----------------|--------------------|
| 25 | William Fiedler | Cintar Engineering |
| 9 | Susan Henshaw | The Bekon Group |

July

- | | | |
|----|-----------------------|-----------------------------|
| 35 | Gail Nagie | |
| 30 | Catherine Houska | Catherine Houska Consulting |
| 12 | Patrick Harding | A.L. Harding |
| 3 | Nicole Bennett Florio | PPG |
| 2 | Ben Marnik | RJ Bridges |
| 1 | Tiffany Peter | IKM |
| 1 | Krista Junker | Eaton |

HAPPY
ANNIVERSARY



Pittsburgh Chapter Leadership FY 2025

Officers

President (25)

Mr. Brian Trimble, PE, LEED AP, CSI, CDT
International Masonry Institute
703-300-0109
btrimble@imiweb.org

1st Vice President (25)

Mr. Dan Barra, CSI
ASSA ABLOY Door Security Solutions
724-249-9866
dbarra@dsstristate.net

2nd Vice President (25)

Mr. Jason Henze, CSI
Overhead Door Co. of Pittsburgh
412-337-1875
jhenze@ohdpgh.com

Secretary (26)

Ms. Susan Henshaw, CSI
The Bekon Group
724-822-1108
susan@bekongroup.com

Treasurer (25)

Mr. Martin Thornton II, CSI, CCS, CDT
AE Works
412-315-3471
marty@aeworks.com

Directors

Sam Roberts, CSI, CDT (25)
The Garland Company, Inc.
412-417-0056
sroberts@garlandind.com

Open (25)

Ms. Kate Schuster, CSI (26)
V.O. George Group, Inc.
724-935-1500
kate@voegeorge.com

Ms. Courtney Watson, CSI, CDT (26)
GCP
(412) 334-0281
courtney.t.watson@gcpat.com

Ms. Michaelleen Vargo, CSI, LEED AP BD+C
LGA Partners (27)
412-224-6232
MVargo@lga-partners.com

Advisors

Ms. Kelly Brown, AIA, CSI, CCS, LEED AP
RM Creative
412-471-4445
kbrown@rmcreative.com

Mr. Matthew Lander, CSI
AVT, Inc.
412-257-5077
mlander@avtinc.net

Committees

Awards

Ms. Michaelleen Vargo, CSI, LEED AP BD+C
LGA Partners
412-224-6232
MVargo@lga-partners.com

Certification

Mr. Bill Vernon, AIA, CSI, CCS, LEED AP
Macgregor Associates Architects
678-504-1493
BillVernon411@gmail.com

Hospitality/Holiday Party

Ms. Kelly Brown, AIA, CSI, CCS, LEED AP
RM Creative
412-471-4445
kbrown@rmcreative.com

Industry Liaisons

Joanna Beres

Membership

Ms. Susan Henshaw, CSI
The Bekon Group
724-822-1108
susan@bekongroup.com

Newsletter Editor

Ms. Susan Henshaw, CSI
The Bekon Group
724-822-1108
susan@bekongroup.com

Programs

Ms. Jenna Glover, LEED AP BD+C, AIA, CSI
Design Group
412-948-1517
jglover@designgroup-us.com

Sponsorships

open

Sporting Events

Mr. Dan Barra, CSI
ASSA ABLOY Door Security Solutions
724-249-9866
dbarra@dsstristate.net

Strategic Planning

Mr. Dan Barra, CSI
ASSA ABLOY Door Security Solutions
724-249-9866
dbarra@dsstristate.net

Student Outreach

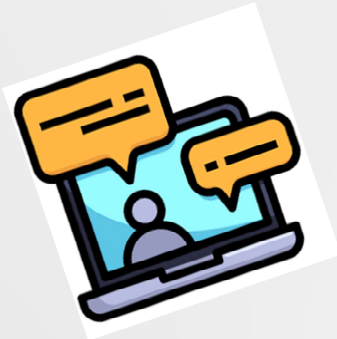
Joanna Beres
Code.Sys Code Consulting, Inc.
412-491-0832
jberes@code-sys.com

Technical/Education

Mr. Bill Cauley, CSI
Armstrong World Industries
878-600-1893
WTCauley@armstrongceilings.com

Website

Ms. Kate Schuster, CSI
V.O. George Group, Inc.
724-935-1500
kate@voegeorge.com



Connect with us online!



Our new website:

<https://www.csipittsburgh.org/>



<https://www.linkedin.com/in/csi-pittsburgh-a6a445347/>



<https://x.com/CsiPittsburgh>



<https://www.facebook.com/profile.php?id=100068210367253>